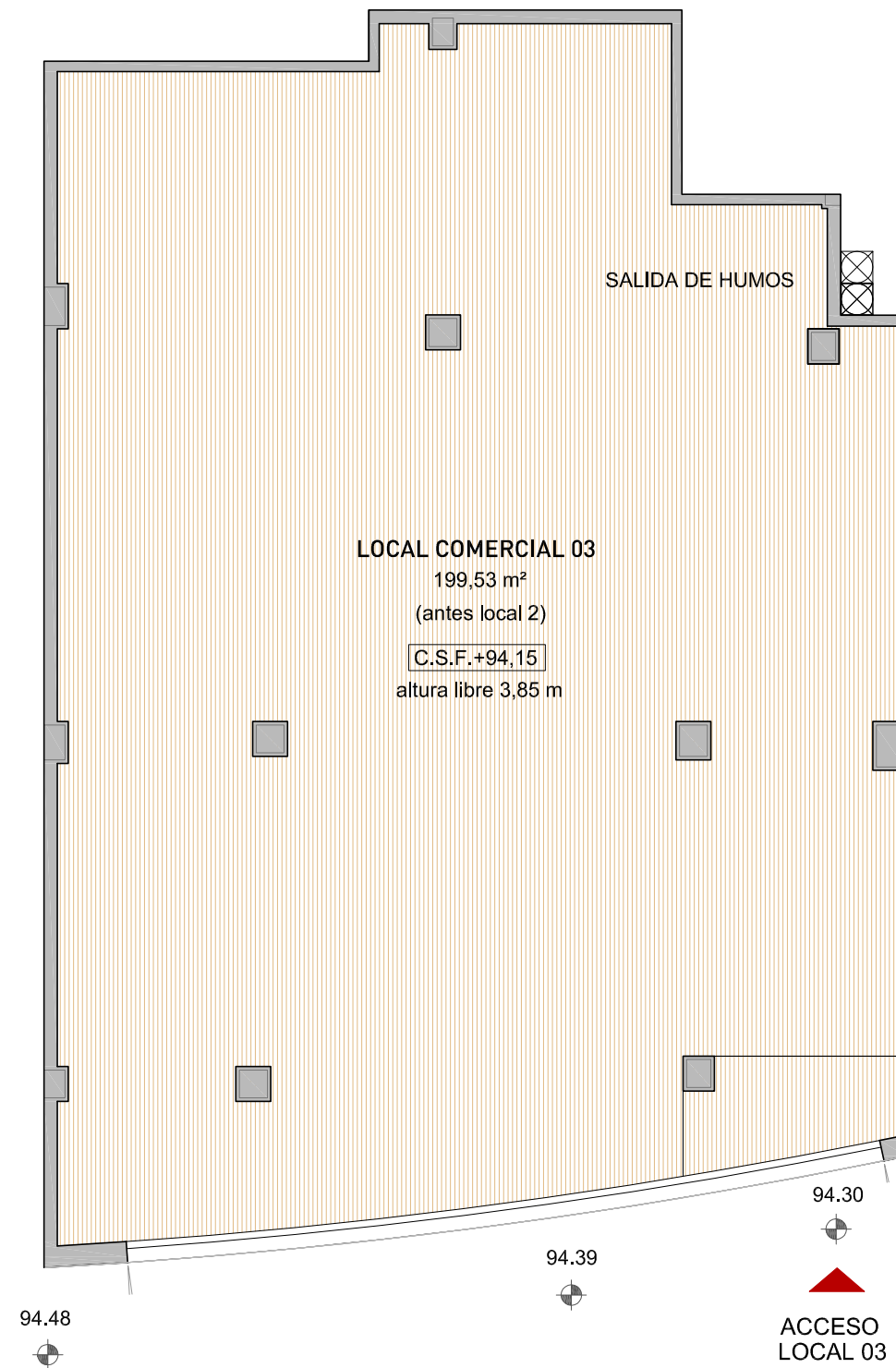
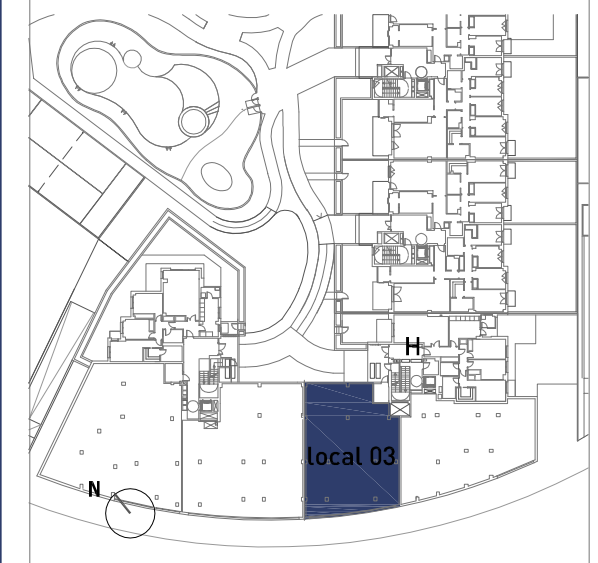
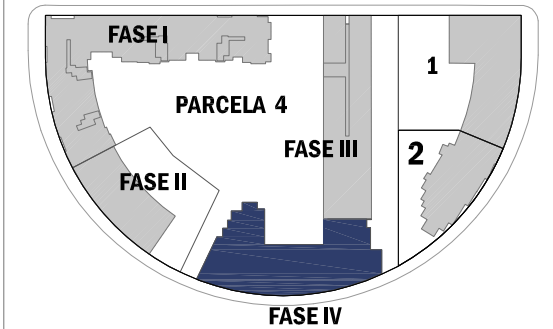


# Las Terrazas de Las Tablas III

**EDIFICIO IV. FASE IV**  
**40 viviendas. Parcela A-26**  
**PLANTA BAJA Portal H LOCAL COMERCIAL 03**

Superficie Útil	187,80 m <sup>2</sup>
Superficie Construida	199,53 m <sup>2</sup>



escala grafica

